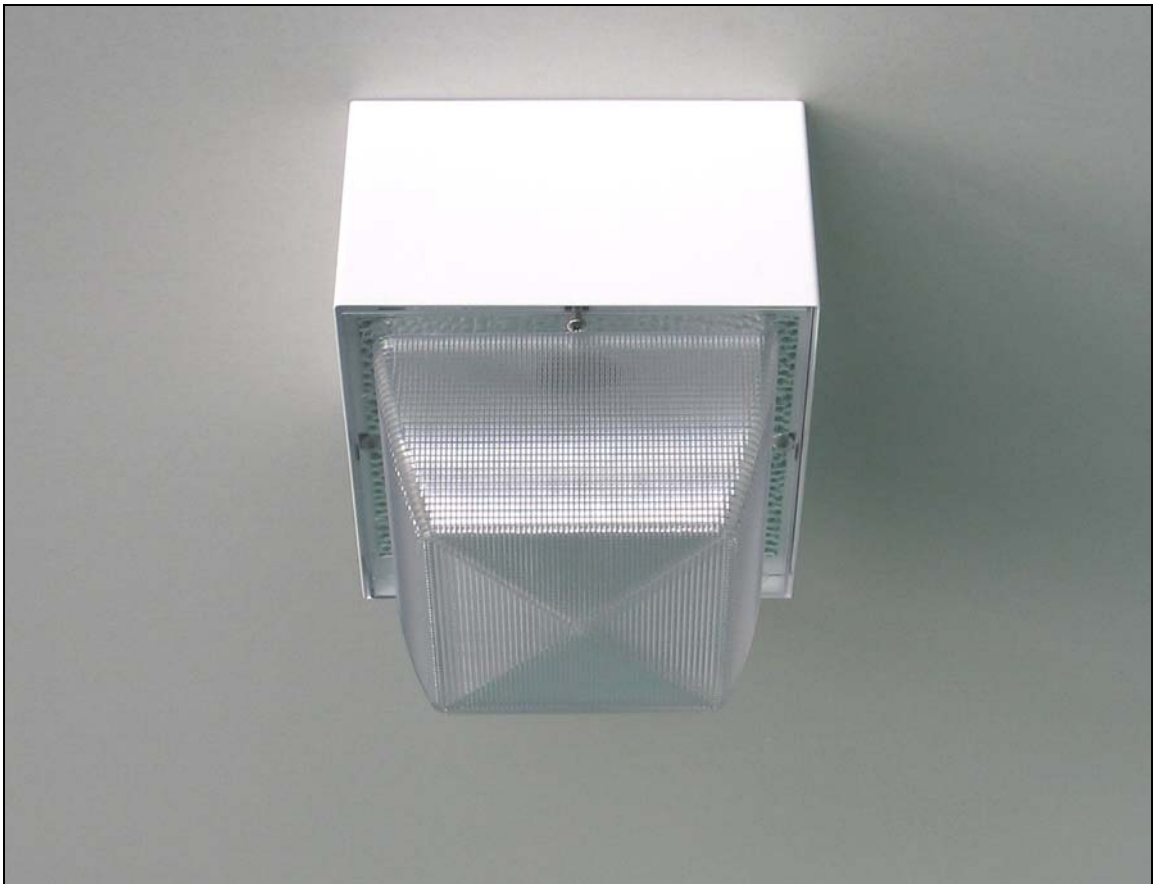




LITEFORM®



5043-8

LITEFORM® 5043-8

Features

Dimensions 8.75" Square X 9.313" Height

Lens Clear prismatic polycarbonate, UV stabilized

Reflector Hammertone, specular finish, clear anodized aluminum

Ballast High power factor, magnetic, core & coil

Lamp holder Medium base, porcelain, 4KV pulse-rated

Housing 18 gauge satin coat steel

Hardware Stainless steel

Finish Polyester powder coat

Colour White

Emergency Restrike (Optional) Auxiliary relay c/w 100W quartz bayonet base lamp

Application Surface ceiling mount for canopy, stairway, and garage lighting

Specification Guide

LITEFORM 5043-8	-	WATTAGE	-	VOLTAGE	-	COLOUR	-	(EMG RESTRIKE)
		50 HPS		120 V		WHITE		
		70 HPS		347 V				
		50 MH						
		70 MH						

Example: LITEFORM 5043-8-70HPS-120V-WHITE



Liteform International Inc.
261 Ambassador Drive Mississauga, Ontario L5T 2J2
Canada Tel: (905) 564-2090 Fax: (905) 564-2102
www.liteformlighting.com